



Saswat Golap Residency

Tamando, Bhubaneswar

We build homes not houses...







We build for you
Adorable Abodes.. your homes...



We are proud that we are
Saswat

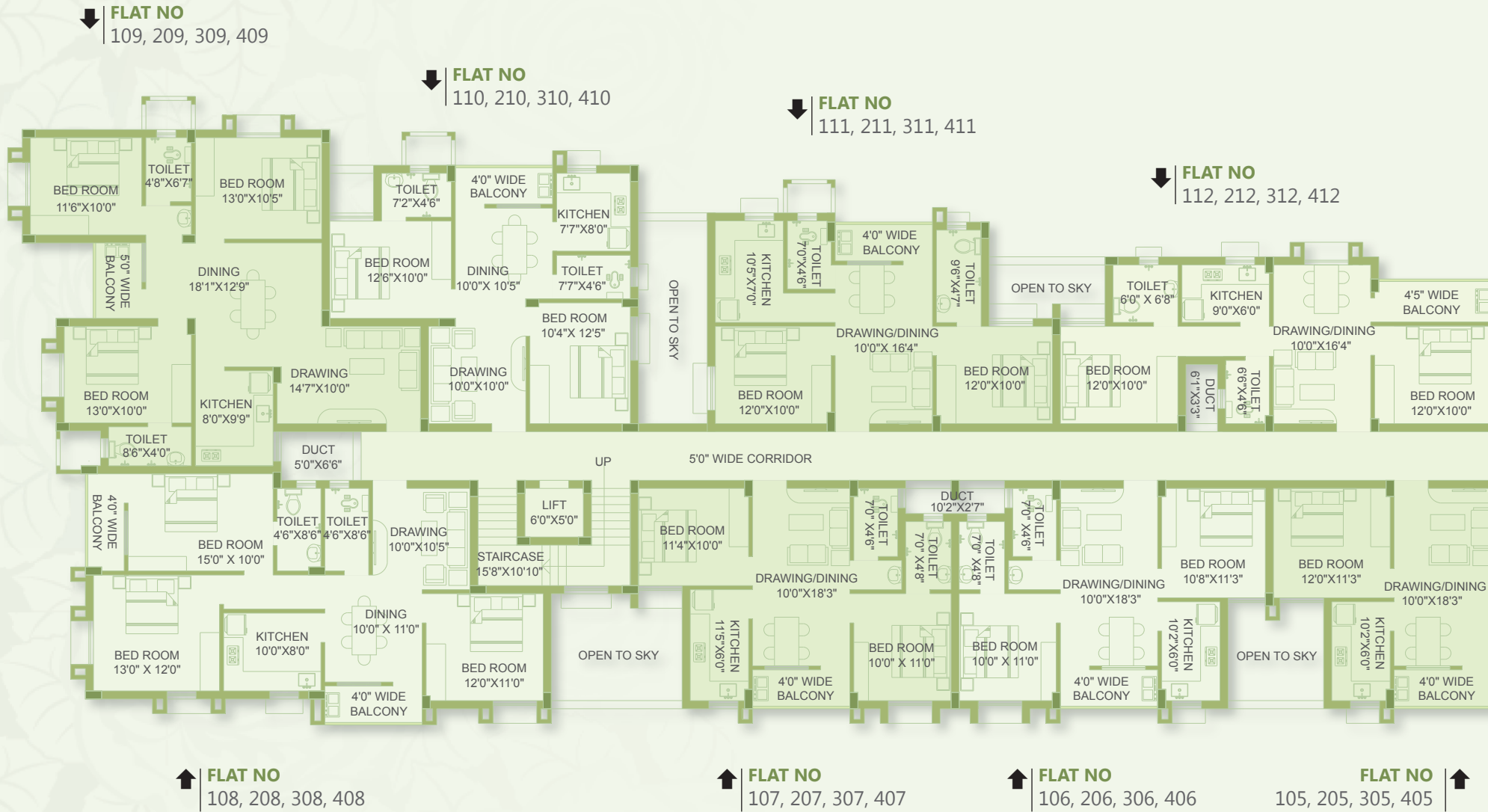
SASWAT INFRASTRUCTURE PVT. LTD. has its objectives to provide each dreamers of the third world 'a home'.....to live, a place to enjoy, an environment to feel and a tangible dream to touch! The SIPL has proved its excellence at Saswat Homes the un-putdownable residential aroma at Patia near Big Bazar!

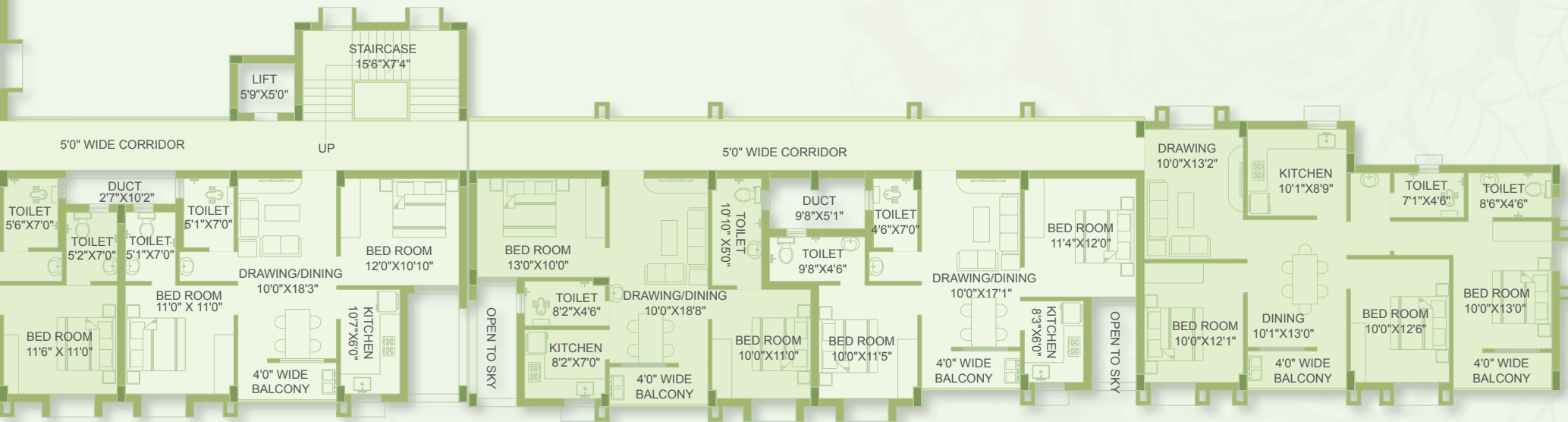
And now It is... at Tamando, Bhubaneswar

The most intimate place where you can fit, relax, enjoy, play and have a hygienic atmosphere, natural environment and above all a very cheerful life to live in.

It has been a dream but will soon come to life, It is our motto !

Typical Floor Plan





↑ **FLAT NO**
104, 204, 304, 404

↑ **FLAT NO**
103, 203, 303, 403

↑ **FLAT NO**
102, 202, 302, 402

↑ **FLAT NO**
101, 201, 301, 401



Facility

- Project approved by BDA
- Project approved by all leading banks
- Ample parking area at stilt
- Air conditioned multi purpose society hall
- Grand entrance gate with security
- Rain water recharging pits
- CCTV
- 2 Nos. of 6 passanger lift
- Children play area
- 24Hrs power backup in common area
- Green plantation around the stilt
- Air conditioned multi gym

Specification

STRUCTURE :

Earthquake resistance RCC framed structure.
RCC framed structure with in filled brick wall.

FLOORING :

Bed rooms - vitrified tiles.
Kitchen - vitrified tiles.
Toilet - anti skid ceramic tiles.
Common areas - kota stone.

DOORS & WINDOWS :

Door frames - Sal wood.
Main door - Masonite door finished with enamel paint.
Other doors - Flush doors with enamel paint.
Windows - Anodised aluminium window with safety grills.
Toilet - Water proof fiber doors.

KITCHEN :

Design to suit modular kitchen.
Cooking platform with granite top.
Designer tiles up to 3 feet height above the platform. provision for chimney and exhaust fan.
Stainless steel sink.

TOILET :

CP fittings of standard make.
Designer tiles on walls up to roof height.
Provision for exhaust fan and geyser.

WALL :

Internal - Wall putty with one coat of white primer.
External - Combination of texture & weather resistant paints.

ELECTRICAL :

Modular electrical switches.
TV and telephone points in bedrooms & living room.
Provision for a/c in all rooms.
Provision for inverter.



Super Special & Significant

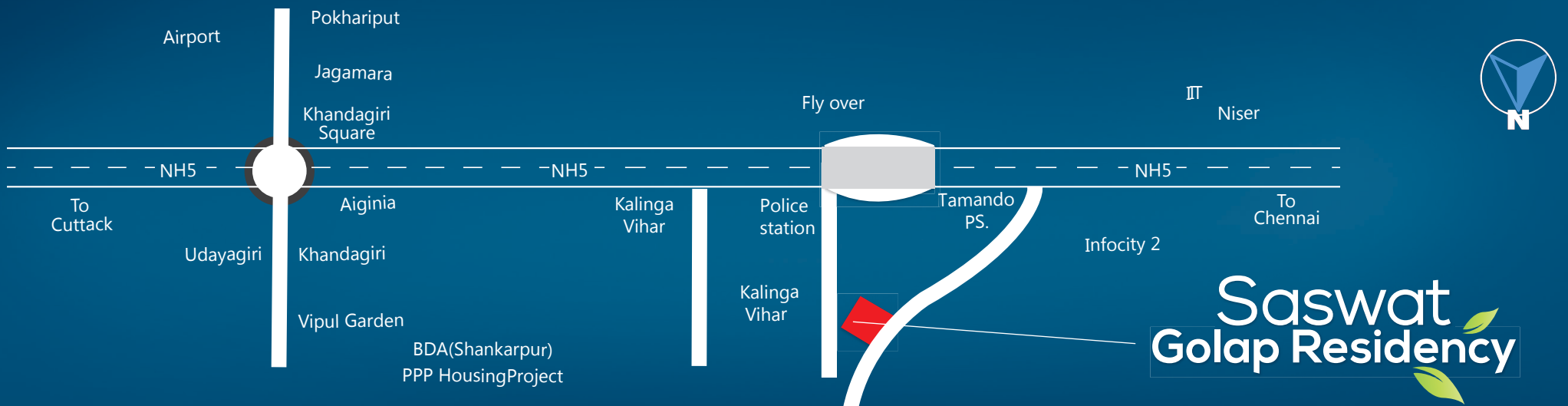
The Saswat Golap Residency is our new exclusive endeavour. A majestic multi stored housing complex approved by the BDA. It is Super Special significant !

It gives the look of a kingly mansion by the side of NH-5.

The complex is 5 minutes distance from AIMS & Khandagiri, only 15 minutes distance from Airport, Railway Station & Bus Stand.

The location is situated at the centre of greater Bhubaneswar master plan of IIT Kharagpur with all weather all hour communication facilities!

We call it super special & significant; all call it a complex of artistic home.



Developer

SASWAT INFRASTRUCTURE PVT LTD
627, Saheed Nagar, Bhubaneswar
P : 0674 2540767, M : 9040555666, 9040666666
E-mail : contactsaswat@yahoo.co.in
www.saswatinfrastructure.com



Architect

Plot No-271, 2nd Floor, Kharvel Nagar
Unit-3, Bhubaneswar 751001, Odisha.
E-Mail: sthapathi.architects@gmail.com